

## **A14 Cambridge to Huntingdon Improvement Scheme February to March 2019**

**Section 1 and 2 – Alconbury & Ellington to East Coast Main Line**  
**Section 3 - East Coast Main Line to Swavesey**  
**Sections 4 and 5 - Swavesey to Milton**  
**Section 6 – Huntingdon**

### **Traffic Management:**

**Sections 1 and 2:** Narrow lanes and reduced speed limits will remain in place on the north and southbound carriageways of the A1 for a few more weeks as we complete the surfacing of the new road. The following closures will be used for this work:

A1 northbound - weekend closure from Buckden to Brampton Hut from 9pm on Friday 1 March to 5am on Monday 4 March, including Brampton exit and entry slip roads.

Weekday overnight closures (9pm to 6am) from Buckden to Alconbury on the nights of Friday 1, Monday 4 – Friday 8 and Monday 11– Friday 15 March.

The signed diversion for these northbound closures is via the A428, A1198 and A14.

A1 southbound - weekend closures from Brampton Hut to Buckden from 9pm on Friday 8 March to 5am on Monday 11 March, 9pm on the Friday 15 to 5am on Monday 18 March and 9pm on Friday 22 to 5am on Monday 25 March, including Brampton exit and entry slip roads. A signed diversion will be in place via the A14, A1198 and A428.

Weekday overnight closures Monday 4 – Friday 8 March, Monday 11- Friday 15 March and Monday 18 – Friday 22 March, Alconbury to Buckden.

The signed diversion for these southbound closures is via the A14, A1198 and A428.

### **Section 3:**

Conington Road will be closed during the weekend of Saturday 2 – Sunday 3 March for utility and carriageway works.

### **Sections 4 & 5:**

There will be 7-night closures of both the east and west bound A14 between junction 28, Swavesey and junction 29, Bar Hill, from 9pm to 6am on Monday 4 - Sunday 10 March. This is for the concrete to be poured to form the deck of the new Lolworth bridge.

Narrow lanes and the 40mph speed limit on the A14 between the M11 junction at Girton and Dry Drayton remain in place in preparation for construction activity.



## **A14 Cambridge to Huntingdon Improvement Scheme February to March 2019**

### **Construction Activities:**

**Section 1:** Surfacing of the A1 continues on both carriageways, with the top layer of asphalt being laid during weekend closures to ensure a high-quality, durable running surface. Gantries have also been erected during overnight closures. Surfacing will switch from the northbound carriageway to southbound, with final surfacing and barrier construction on course for completion before the end of March. This will be another project milestone.

**Section 2:** Another recent milestone was the transfer of traffic onto the new alignment of the B1514 Brampton/Buckden Road, beneath the new A14 underpass. This has allowed us to begin building up the level of the new A14 over the old Buckden Road as it heads towards the new River Great Ouse (RGO) crossing. The RGO viaduct is now structurally complete and a time-lapse video of the construction of this impressive structure, can be found on our website:

<https://highwaysengland.co.uk/major-milestone-for-a14-as-huge-new-bridge-completed/>



**Section 3:** Surfacing on the Huntingdon southern bypass has resumed, transforming long stretches into recognisable road. Less obvious, but essential, is the mainline drainage work, which is progressing well, with completion expected in the spring. Work to create the embankments for the new bridge at New Barns Lane is nearly complete and the beams for the bridge are expected to be installed in April.

You can contact us on our dedicated A14 Public Helpline 0800 270 0114  
Scheme information is also available at our website  
[www.highwaysengland.co.uk/A14C2H](http://www.highwaysengland.co.uk/A14C2H) and you can also follow us at:





## **A14 Cambridge to Huntingdon Improvement Scheme February to March 2019**

At Conington Road, we have almost completed the kerb installation, with the road and new bridge expected to be open to traffic in the spring. Works to complete ponds are underway, as are preparations for landscaping and seeding, fencing and access track construction.

**Sections 4 and 5:** Construction of the new Bar Hill junction is progressing well. Following a series of night closures, the bridge deck is almost complete. One half of the new junction will be brought into operation later this year, after which we will demolish the old bridge. Details will be shared closer to the time.

The new bridge, which will give the village of Lolworth both east and west access to the road network once completed, is progressing well.

In March we intend to open the new local access road between Girton and Dry Drayton. This road will connect to the existing A1307 / Huntingdon Road as it leaves Cambridge. Once this road is open the access from the A14 into the crematorium will be changed.

Carriageway widening continues on the Cambridge Northern bypass at Milton. The green tents, which can be seen in the centre of the road, sit over the guided busway, and are protecting traffic from the debris of the hydro demolition (high pressure water jet targeted demolition) work taking place beneath. Once this activity is completed, we will modify the bridge to accommodate the two extra lanes of traffic.

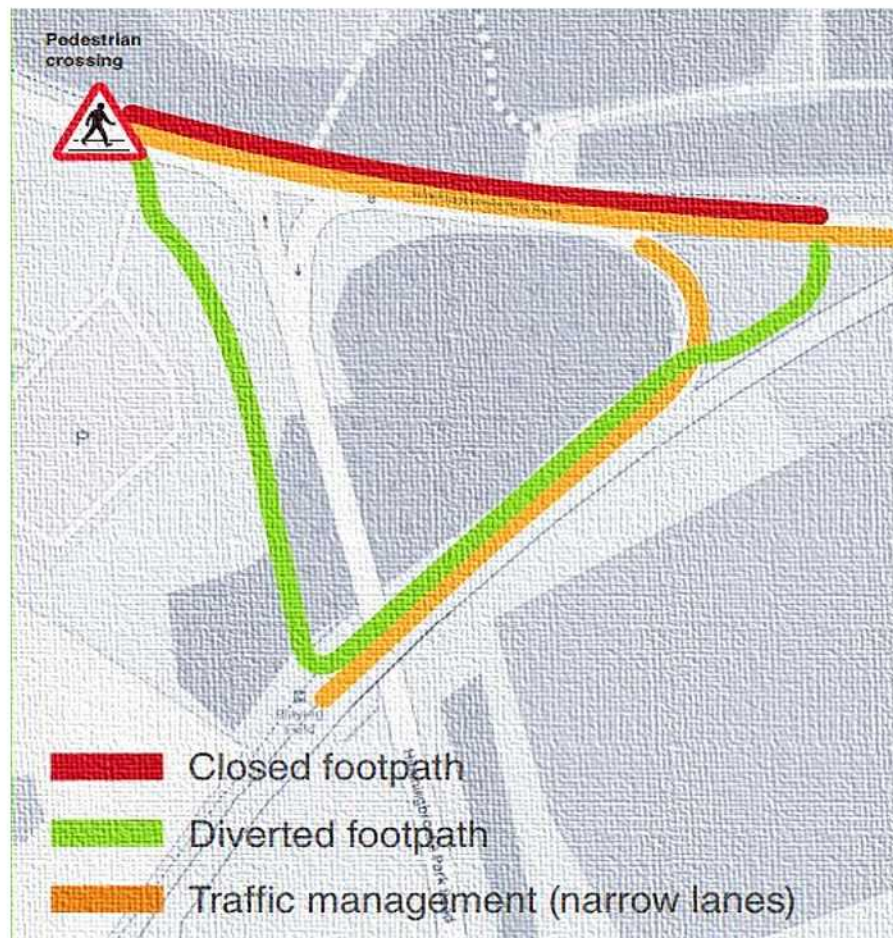
Embankment and road widening at the eastbound off-slip at junction 32, Milton, will start in late March/early April, following completion of utility diversions on Cambridge Road. Work will include constructing a retaining wall around the north west junction, during day-time hours and will take approximately 8 weeks.

**Section 6:** Preparatory work continues, including archaeological excavations along the route of the Pathfinder Link road into Huntingdon. Tree removal has begun on a small stretch of Hinchingsbrooke Park Road, to prepare for construction in the summer and the footpath between the traffic lights opposite the school and the crossing near Brampton Road will be closed temporarily. This is to allow excavations and diversions of utility cables buried under the footpath.

We'll re-route the footpath temporarily and the lanes of Hinchingsbrooke Park Road and Brampton Road will be narrowed during this work, which could take up to 12 months to complete. Some of the work will require overnight or weekend single lane closures. Access to Hinchingsbrooke estate, Hinchingsbrooke School, Hinchingsbrooke Hospital and for emergency services will always be maintained, as traffic light control will be used. Please refer to the diagram below.



## A14 Cambridge to Huntingdon Improvement Scheme February to March 2019



### Open Doors 2019

On 23 March we will be supporting '**Open Doors – Get in to Construction**'. This national annual event is a unique chance for you to see what goes on 'behind the scenes' on the U.K.'s largest highways scheme and to learn more about the diverse range of skills and professions needed on a major infrastructure project.

Please use the links below to book places for guided tours of our works sites and a chance to meet members of the A14 team:

Brampton - <https://opendoors.construction/site/265>

Ermine Street – <https://opendoors.construction/site/266>

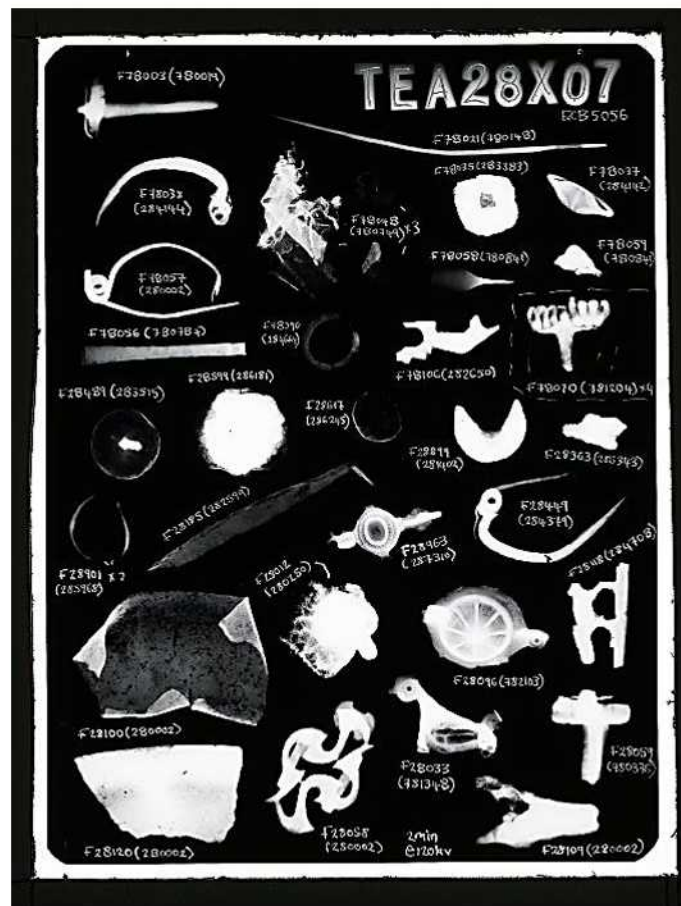
Swavesey - <https://opendoors.construction/site/264>

You can contact us on our dedicated A14 Public Helpline 0800 270 0114  
Scheme information is also available at our website  
[www.highwaysengland.co.uk/A14C2H](http://www.highwaysengland.co.uk/A14C2H) and you can also follow us at:





## Archaeology



Modern technology plays a key part in the post-excavation assessment of the huge range of ancient archaeological finds on the project continues. X-rays imaging is a non-destructive way of exploring metal archaeological finds in more detail, allowing Mola Headland specialists to reveal the true form of heavily corroded items and understand how each artefact was made and to study the features that aren't necessarily visible to the naked eye.

Excavation sites across the project ranged from the very wet to the very dry, so some metal items discovered are remarkably well preserved, while others are very corroded. Finds are arranged on a sheet, as shown in the first picture above, carefully labelled and x-rayed, producing the images shown in the second picture.

You can contact us on our dedicated A14 Public Helpline 0800 270 0114  
Scheme information is also available at our website  
[www.highwaysengland.co.uk/A14C2H](http://www.highwaysengland.co.uk/A14C2H) and you can also follow us at:



## A14 Cambridge to Huntingdon Improvement Scheme February to March 2019



As some of these finds have been in the ground for thousands of years, their identity and detail has been lost or disguised, but it can be retraced. The ring pictured above has been placed face-down on the x-ray plate so that any detail on the front will show up on the x-ray. It's not unrecognisable as a ring, but x-raying it allows the team to see whether any small details, facets or decoration are hidden beneath the corrosion on the surface.

After studying an x-ray image, the specialist conservation team may be able to identify an interesting feature, for example an inlay or something unusual about its shape, which might help with dating. The x-ray image can also help gain a better understanding of the items condition.

### Mobile Visitor Centre

If you'd like to book a visit for your village or town, please email:

[a14cambridgehuntingdon@highwaysengland.co.uk](mailto:a14cambridgehuntingdon@highwaysengland.co.uk)

You can contact us on our dedicated A14 Public Helpline 0800 270 0114  
Scheme information is also available at our website  
[www.highwaysengland.co.uk/A14C2H](http://www.highwaysengland.co.uk/A14C2H) and you can also follow us at:

